



UPLAND

and

LOWLAND

Flowers and Birds
in Japanese Art

Introduction

Japan is a mountainous country with the upper mountain slopes covered largely by forest (**Photo 1**). Wetlands (e.g., marsh, riverbank, lakeshore) and agricultural fields (**Photo 2**) occupy the lower slopes, along with towns and cities.



Photo 1 – Aokigahara, also known as the sea of trees, near Mount Fuji.

Photo source: www.bbc.com



Photo 2 – Sarobetu marsh and agricultural land in the foreground with Mount Rishiri in the background.

Photo source: minorusaito.blogspot.ca

Pictures of upland habitats (i.e., forest) and lowland habitats (i.e., wetland, agricultural fields) drawn by Japanese artists often included their characteristic flowers and birds. This virtual exhibition includes forty of these flower-and-bird pictures, chosen from the Reader Collection of Japanese Flower-and-Bird Art. For each picture the following information is provided: habitat type, names of the flowers and birds, artist's name, picture date and name of the picture book in which the picture was included (if any), printing method and picture size.

1 **Upland** – oak (*Quercus serrata*) and white-backed woodpecker (*Dendrocopos leucotos*) by Shigemasa Kitao, included in Shashin Kachō Zue (i.e., Naturalistic Pictures of Flowers and Birds), 1805-1827, woodblock print, 310 x 220 mm



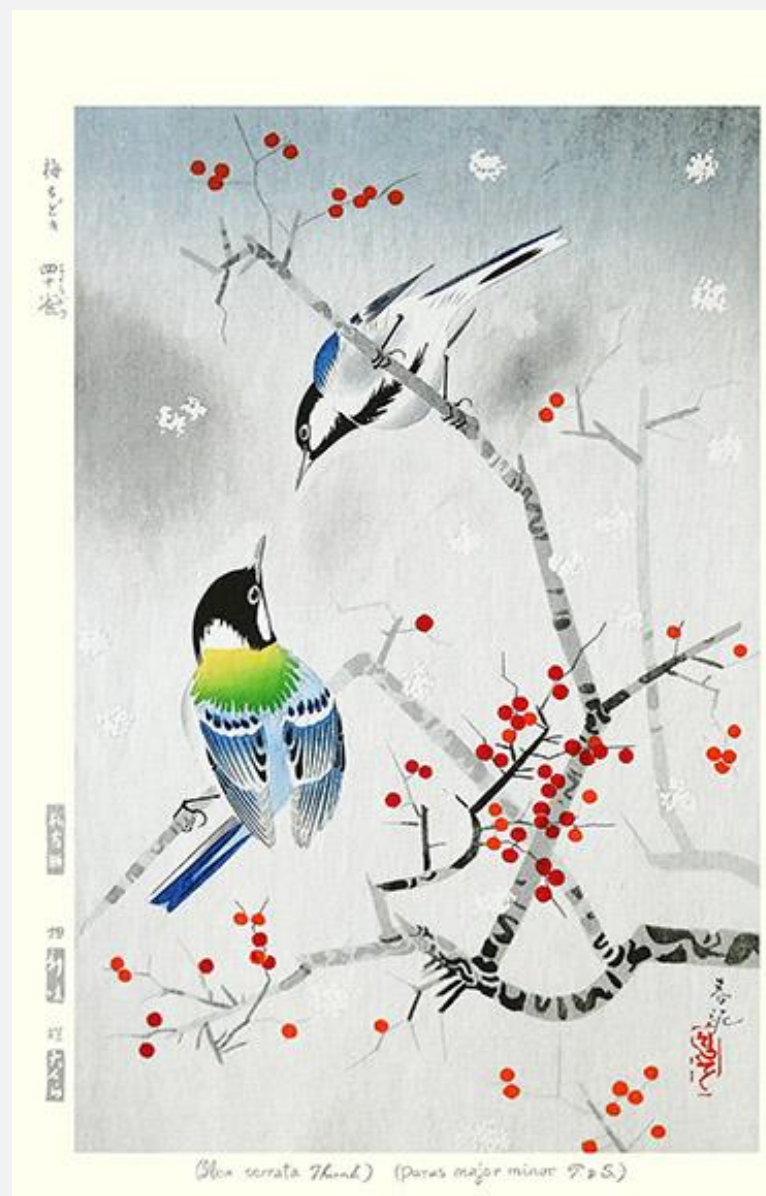
2 **Upland** – Japanese chestnut (*Castanea crenata*) and Ural owl (*Strix uralensis*) by Tōshi Yoshida, woodblock print, 555 x 375 mm



3 **Upland** - sasanqua camellia (*Camellia sasanqua*) and goldcrest (*Regulus regulus*) by Sūgakudō Nakayama, included in Shō Utsushi Shijū-hachi Taka (i.e., Forty-eight Hawks Drawn from Life), 1859, woodblock print, 245 x 365 mm



4 **Upland** – winterberry (*Ilex serrata*) and great tit (*Parus major*) by Shundei Nakamura, woodblock print, 270 x 415 mm



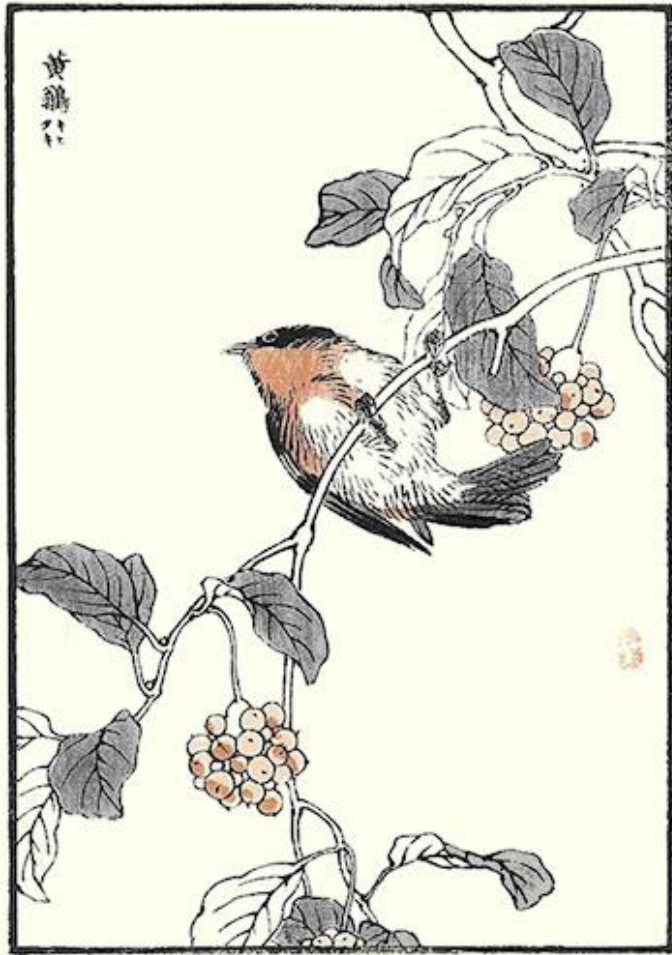
5 **Upland** – Japanese dogwood (*Cornus kousa*) and Japanese white-eye (*Zosterops japonicus*) by Hidetaka Yamanaka, intaglio print, 350 x 240 mm



6 **Upland** – kobus magnolia (*Magnolia kobus*) and scops owl (*Otus* sp.) by Kōhō Ōuchi, woodblock print, 150 x 125 mm



7 **Upland** – Japanese kadsura (*Kadsura japonica*) and narcissus flycatcher (*Ficedula narcissina*) by Bairei Kōno, included in Bairei Hyakuchō Gafu (i.e., Picture Album of One Hundred Birds by Bairei), 1881, woodblock print, 165 x 250 mm



8 **Upland** – fiveleaf akebia (*Akebia quinata*) and hawfinch (*Coccothraustes coccothraustes*) by Bairei Kōno, included in Bairei Hyakuchō Gafu (i.e., Picture Album of One Hundred Birds by Bairei), 1881, woodblock print, 165 x 250 mm



9 **Upland** – snake gourd (*Trichosanthes cucumeroides*) and brown-headed thrush (*Turdus chrysolaus*) by Rakusan Tsuchiya, woodblock print, 590 x 420



10 **Upland** – Japanese maple (*Acer palmatum*) and chestnut-cheeked starling (*Sturnia philippensis*) by Gokyō Kobayashi, included in *Miyo No Hana* (i.e., *Flowers of the Ages*), edited by Kōtarō Yamada, 1892, woodblock print, 155 x 245 mm



11 **Upland** – Japanese creeper (*Parthenocissus tricuspidata*) and Japanese woodpecker (*Picus awokera*) by Keinen Imao, included in Keinen Kachō Gafu (i.e., Picture Album of Flowers and Birds by Keinen), 1891-92, woodblock print, 260 x 370 mm



12 **Upland** – Japanese witch-hazel (*Hamamelis japonica*) and Bohemian waxwing (*Bombycilla garrulus*) by Kashū Numata, included in Shūchō Gafu (i.e., Picture Album of Bird Drawings), 1885-90, woodblock print, 175 x 245 mm



13 **Upland** – cherry (*Prunus* sp.) and blue-and-white flycatcher (*Cyanoptila cyanomelana*) by Rakusan Tsuchiya, woodblock print, 385 x 255 mm



14 **Upland** – pine (*Pinus* sp.) and hawk (*Accipiter* sp.) by Shōun Yamamoto, woodblock print, 205 x 145 mm



15 **Upland** – camellia (*Camellia japonica*) and Eurasian bullfinch (*Pyrrhula pyrrhula*) by Jō. woodblock print, 195 x 400 mm



16 **Upland** – Japanese laurel (*Aucuba japonica*) and Daurian redstart (*Phoenicurus auroreus*) by Tōshi Yoshida, woodblock print, 340 x 540 mm



17 **Lowland** – water-lily (*Nuphar japonicum*) and common snipe (*Gallinago gallinago*) by Rakusan Tsuchiya, woodblock print, 605 x 440 mm



18 **Lowland** – sweet flag (*Acorus gramineus*) and little egret (*Egretta garzetta*) by Rakusan Tsuchiya, woodblock print, 615 x 470 mm



19 **Lowland** – Chinese arrowhead (*Sagittaria trifolia*), monochoria (*Monochoria korsakowii*), rush (*Juncus* sp.) and water rail (*Rallus aquaticus*) by Keinen Imao, included in Keinen Kachō Gafu (i.e., Picture Album of Flowers and Birds by Keinen), 1891-92, woodblock print, 260 x 370 mm



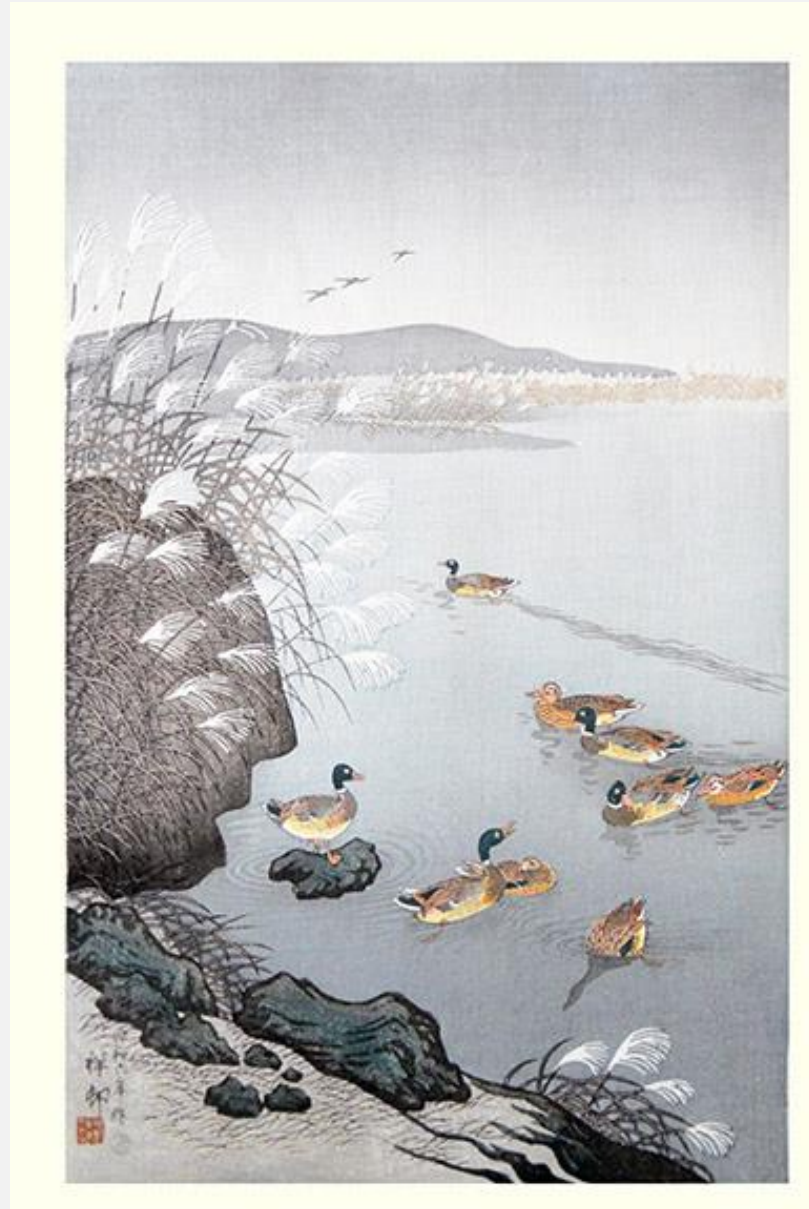
20 **Lowland** – willow (*Salix* sp.), knotweed (*Polygonum* sp.) and white wagtail (*Motacilla alba*) by Keinen Imao, included in Keinen Kachō Gafu (i.e., Picture Album of Flowers and Birds by Keinen), 1891-92, woodblock print, 260 x 370 mm



21 **Lowland** – sacred lotus (*Nelumbo nucifera*) and zitting cisticola (*Cisticola juncidis*) by Koson Ohara, woodblock print, 195 x 370 mm



22 **Lowland** – Amur silver grass (*Miscanthus sacchariflorus*) and mallard duck (*Anas platyrhynchos*) by Koson Ohara, woodblock print, 260 x 390 mm



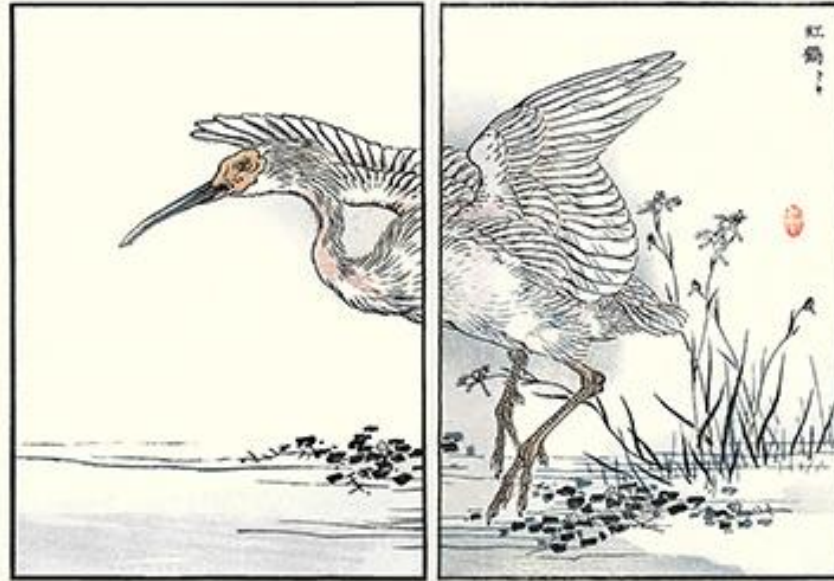
23 **Lowland** – bur-reed (*Sparganium* sp.) and greater painted-snipe (*Rostratula benghalensis*) by Bairei Kōno, included in Bairei Hyakuchō Gafu Zokuhen (i.e., Picture Album of One Hundred Birds by Bairei, Sequel), 1884, woodblock print, 165 x 250 mm



24 **Lowland** – rush (*Juncus* sp.) and gray heron (*Ardea cinerea*) by Bairei Kōno, included in Bairei Hyakuchō Gafu (i.e., Picture Album of One Hundred Birds by Bairei), 1881, woodblock print, 165 x 250 mm



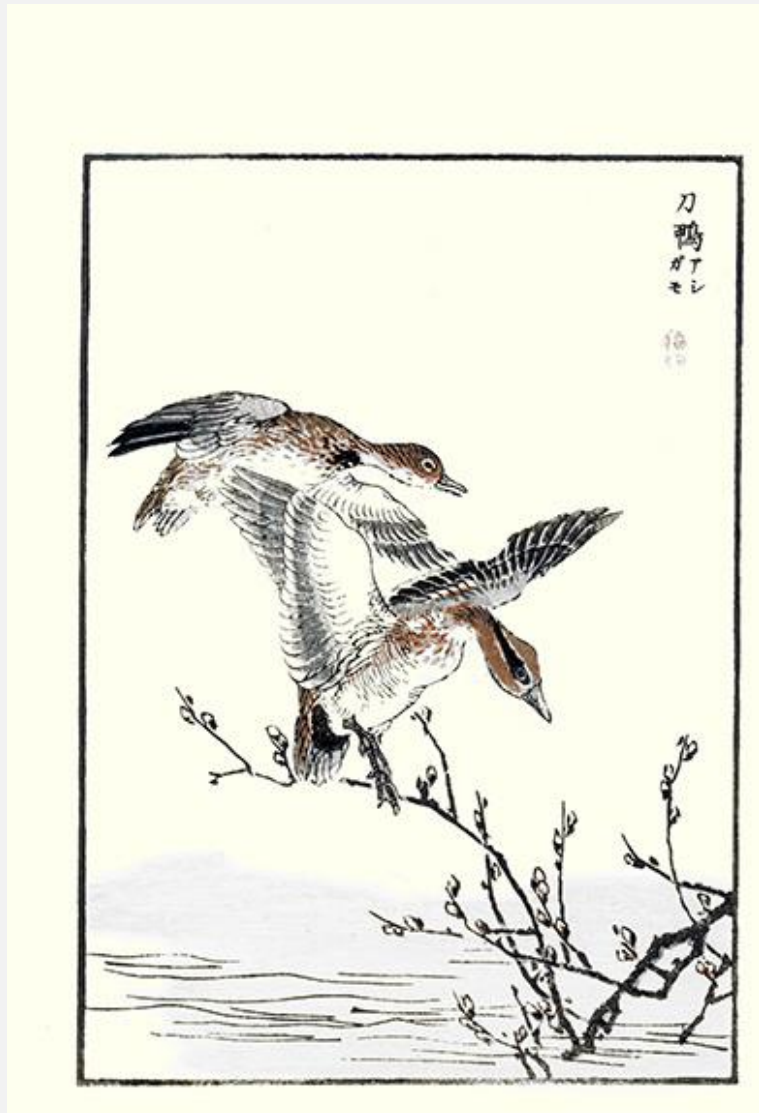
25 **Lowland** – egret orchid (*Habenaria radiata*) and crested ibis (*Nipponia nippon*) by Bairei Kōno, included in Bairei Hyakuchō Gafu (i.e., Picture Album of One Hundred Birds by Bairei), 1881, woodblock print, 330 x 250 mm



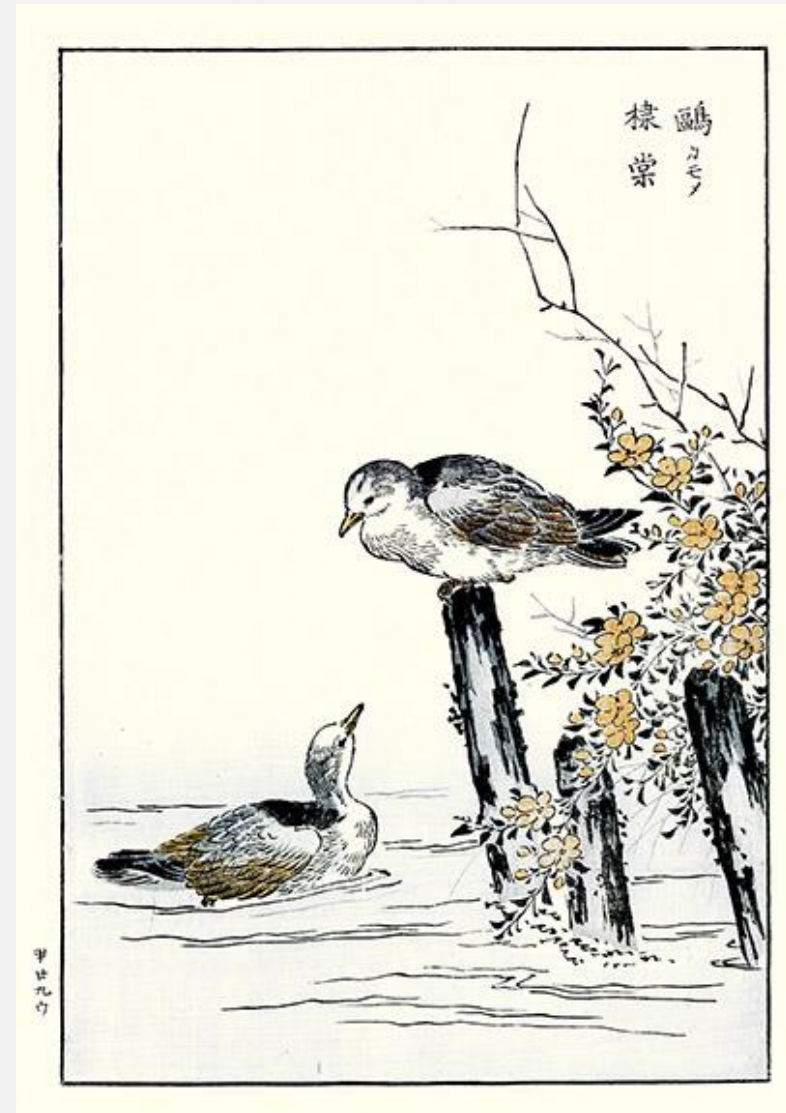
26 **Lowland** – monochoria (*Monochoria korsakowii*) and mandarin duck (*Aix galericulata*) by Sadanobu II Hasegawa, woodblock print, 290 x 230 mm



27 **Lowland** – willow (*Salix* sp.) and green-winged teal (*Anas crecca*) by Bairei Kōno, included in Bairei Hyakuchō Gafu (i.e., Picture Album of One Hundred Birds by Bairei), 1881, woodblock print, 165 x 250 mm



28 **Lowland** – Japanese kerria (*Kerria japonica*) and black-headed gull (*Chroicocephalus ridibundus*) by Bunrei Maekawa, included in Bunrei Kachō Gafu (i.e., Picture Album of Flowers and Birds by Bunrei), woodblock print, 490 x 355 mm



29 **Lowland** – Japanese iris (*Iris ensata*) and common moorhen (*Gallinula chloropus*) by Sakai Hōitsu, woodblock print, 130 x 245 mm



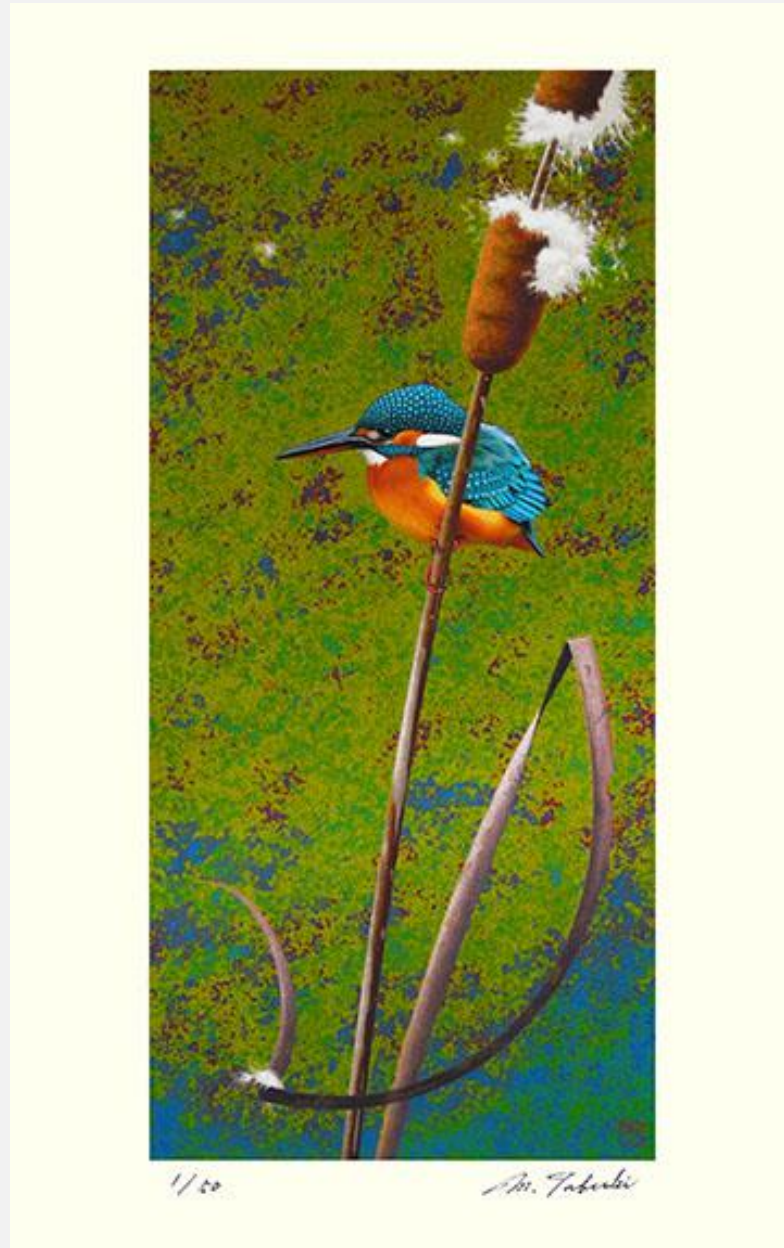
30 **Lowland** – fringed pink (*Dianthus superbus*) and northern lapwing (*Vanellus vanellus*) by Gessō Yoshimoto, woodblock print, 140 x 260 mm



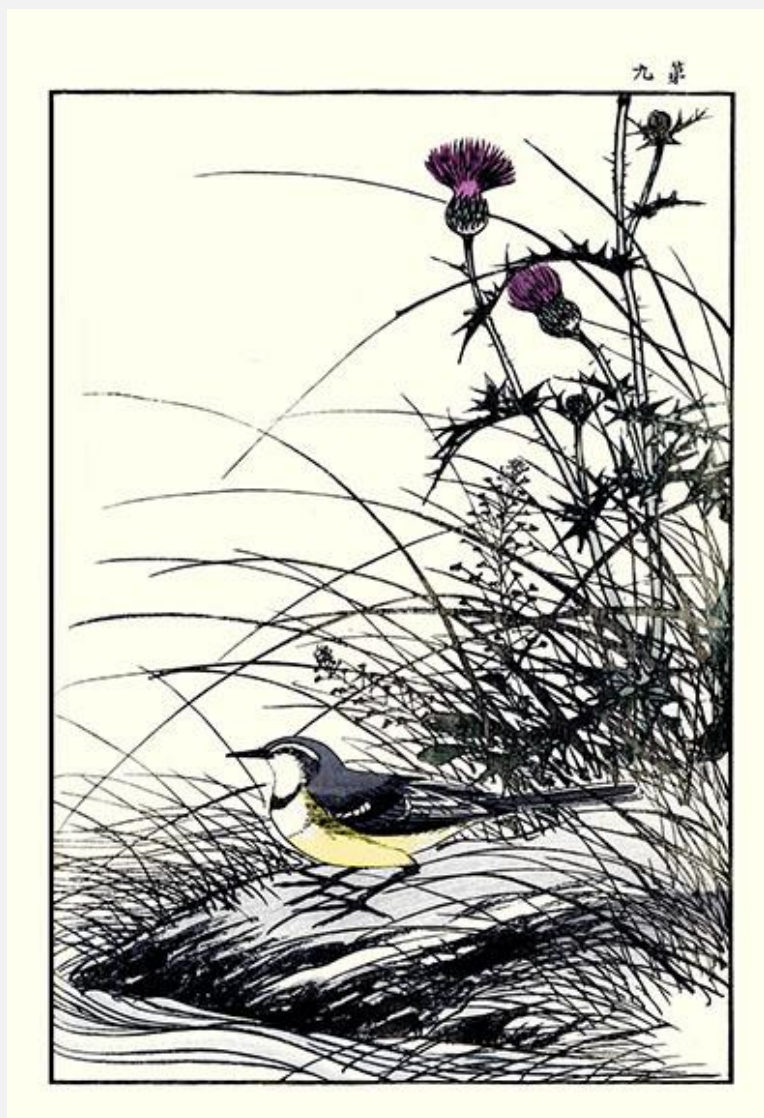
31 **Lowland** – common reed (*Phragmites australis*) and swan goose (*Anser cygnoides*) by Hiroshige III Utagawa, included in *Kachō Zufu* (i.e., Picture Album of Flowers and Birds), undated, woodblock print, 125 x 180 mm



32 **Lowland** – cattail (*Typha latifolia*) and common kingfisher (*Alcedo atthis*) by Masahiro Tabuki, digital print, 305 x 480 mm



33 **Lowland** – thistle (*Cirsium* sp.), shepherd's purse (*Capsella bursa-pastoris*) and gray wagtail (*Motacilla cinerea*) by Keinen Imao, included in Keinen Kachō Gafu (i.e., Picture Album of Flowers and Birds by Keinen), 1891-92, woodblock print, 260 x 370 mm



34 **Lowland** – Japanese-lantern (*Physalis alkekengi*) and meadow bunting (*Emberiza cioides*) by Keinen Imao, included in Keinen Kachō Gafu (i.e., Picture Album of Flowers and Birds by Keinen), 1891-92, woodblock print, 260 x 370 mm



35 **Lowland** – pea (*Pisum sativum*) and oriental greenfinch (*Carduelis sinica*) by Rakusan Tsuchiya, woodblock print, 575 x 430 mm



36 **Lowland** – barley (*Hordeum vulgare*) and Japanese thrush (*Turdus cardis*) by Seitei Watanabe, woodblock print, 280 x 210 mm



37 **Lowland** – foxtail millet (*Setaria italica*) and Japanese quail (*Coturnix japonica*) by Utamaro Kitagawa, woodblock print, 175 x 260 mm



38 **Lowland** – pumpkin (*Cucurbita pepo*) and gray bunting (*Emberiza variabilis*) by Keinen Imao, included in Keinen Kachō Gafu (i.e., Picture Album of Flowers and Birds by Keinen), 1891-92, woodblock print, 260 x 370 mm



39 **Lowland** – Chinese milk-vetch (*Astragalus sinicus*), dandelion (*Taraxacum* sp.), violet (*Viola* sp.), field horsetail (*Equisetum arvense*), skylark (*Alauda arvensis*) and olive-backed pipit (*Anthus hodgsoni*) by Keinen Imao, included in Keinen Kachō Gafu (i.e., Picture Album of Flowers and Birds by Keinen), 1891-92, woodblock print, 260 x 370 mm



40 **Lowland** – rape (*Brassica napus*) and dusky thrush (*Turdus naumanni*) by Sadanobu II Hasegawa, woodblock print, 285 x 230 mm



[Back to Exhibitions](#)